

## Croma Select S

### Croma Select S 180 2jet Showerpipe with single lever mixer

Surfaces: **white/chrome** Article Number: **27255400**



#### Description

##### product features

- overhead shower Croma Select S 180 2jet
- shower head size: 180 mm
- overhead shower angle adjustable
- spray type: Rain, IntenseRain
- convenient diversion via Select button
- flow rate IntenseRain spray (at 0.3 MPa): 16 l/min
- flow rate Rain spray (at 0.3 MPa): 16 l/min
- operating pressure: min. 1,5 bar / max. 10 bar
- shower arm length: 400 mm
- swivelling shower arm
- height-adjustable hand shower holder
- scope of supply: wall bar spacer (grey)
- installation type: exposed installation
- connection dimension DN15
- connection thread G ½
- centre distance 150 mm ± 12 mm
- ceramic cartridge
- temperature limitation adjustable

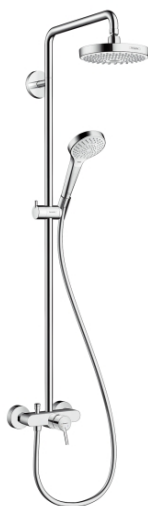
##### consists of

- Isiflex shower hose 1.60 m (#28276XXX)
- Croma Select S 180 2jet overhead shower (#26522XXX)
- Croma Select S Multi hand shower (#26800XXX)

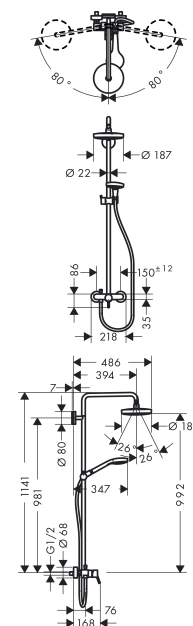
#### Technology



#### Product image



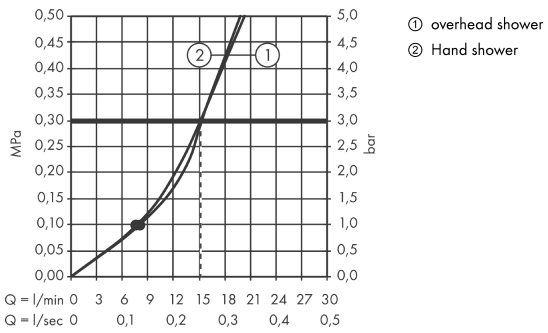
#### Scale drawing



**Croma Select S**  
**Croma Select S 180 2jet Showerpipe with single lever mixer**  
 Surfaces: **white/chrome** Article Number: **27255400**



## Flowchart



**Croma Select S**  
**Croma Select S 180 2jet Showerpipe with single lever mixer**  
 Surfaces: **white/chrome** Article Number: **27255400**



## Installation examples

